

**intec**  
INSTITUTO TECNOLÓGICO DE SANTO DOMINGO

# WE ARE...

**Private**

**Nonprofit**

**Non – confessional  
University**

**Founded in 1972**



# WE ARE...

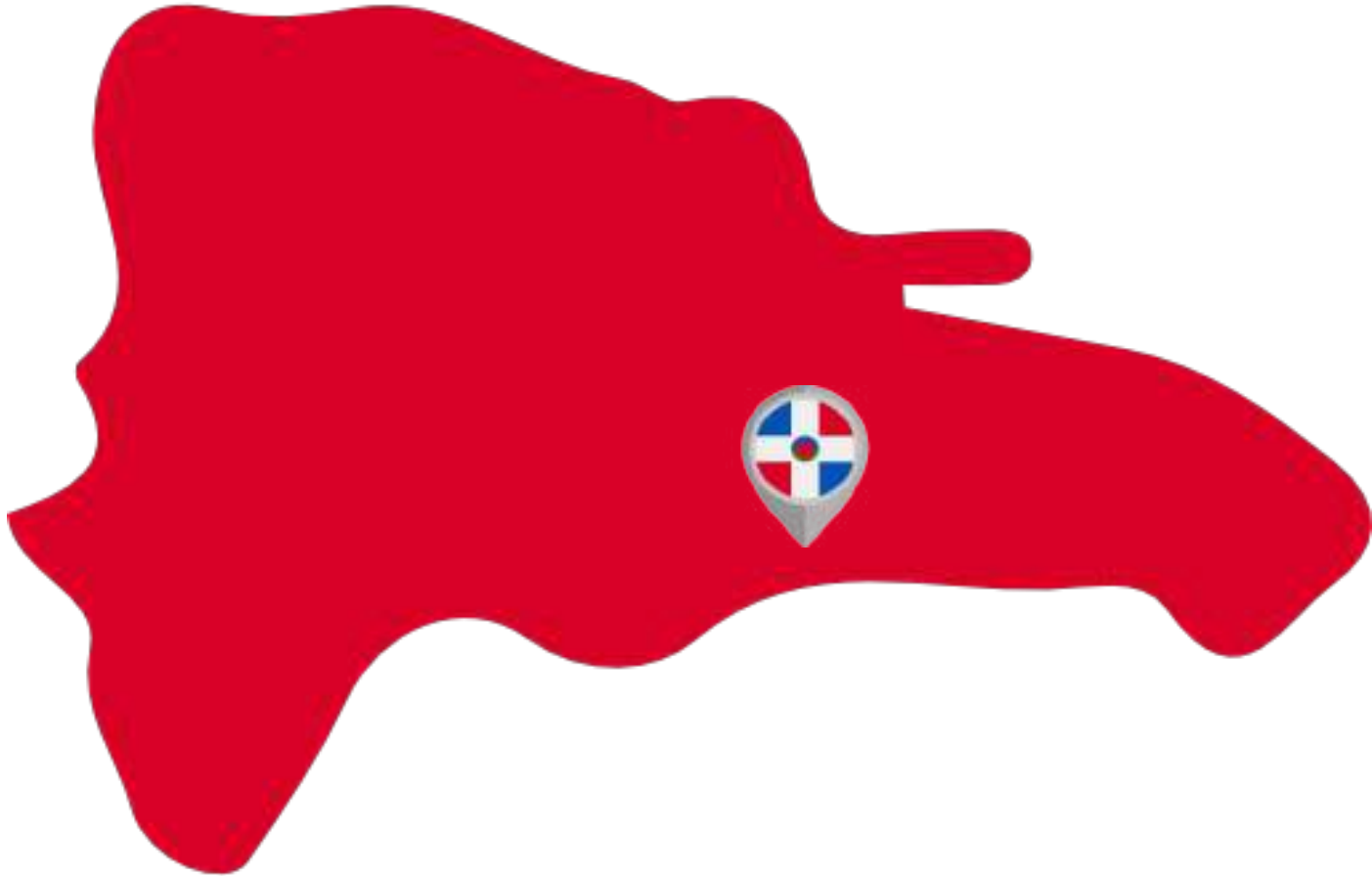
We are a **pluralistic** academic community integrated by students, faculty, staff and alumni who believe in the transformative power of knowledge and is committed every day to **provide solutions** that ensure a better future for the Dominican society and the world.



# OUR LOCATION



In Santo Domingo, **Dominican Republic**



# OUR COMMUNITY

**Santo Domingo**

**Capital and Largest City**



**“God, Homeland, Freedom.”**

**Our Motto**

**Spanish**

**Official Language**



# OUR COMMUNITY

**48,315 km<sup>2</sup>**

**Total Area**

**32**

**provinces**

**10,266,149**

**Our 2018 estimated Population**



# OUR COMMUNITY



## Zona Colonial

**Oldest permanent European  
settlement of the Americas**



## Larimar

**silicate mineral pectolite  
found only in our country**

# OUR COMMUNITY



## Baseball

¡National official sport!



## Carnival

A big representation  
of our culture

# OUR CAMPUS





**intec**

## MISSION

We are a plural and innovating academic community, that forms **ethic, entrepreneurs and internationally competitive citizens and professionals**, and generates knowledge in benefit of society.

## VISION

To be a space that inspires creation of knowledge, innovation and excellence, to contribute to the **sustainable development** of society.

# OUR VALUES

**Excellence**

**Innovation**

**Integrity**

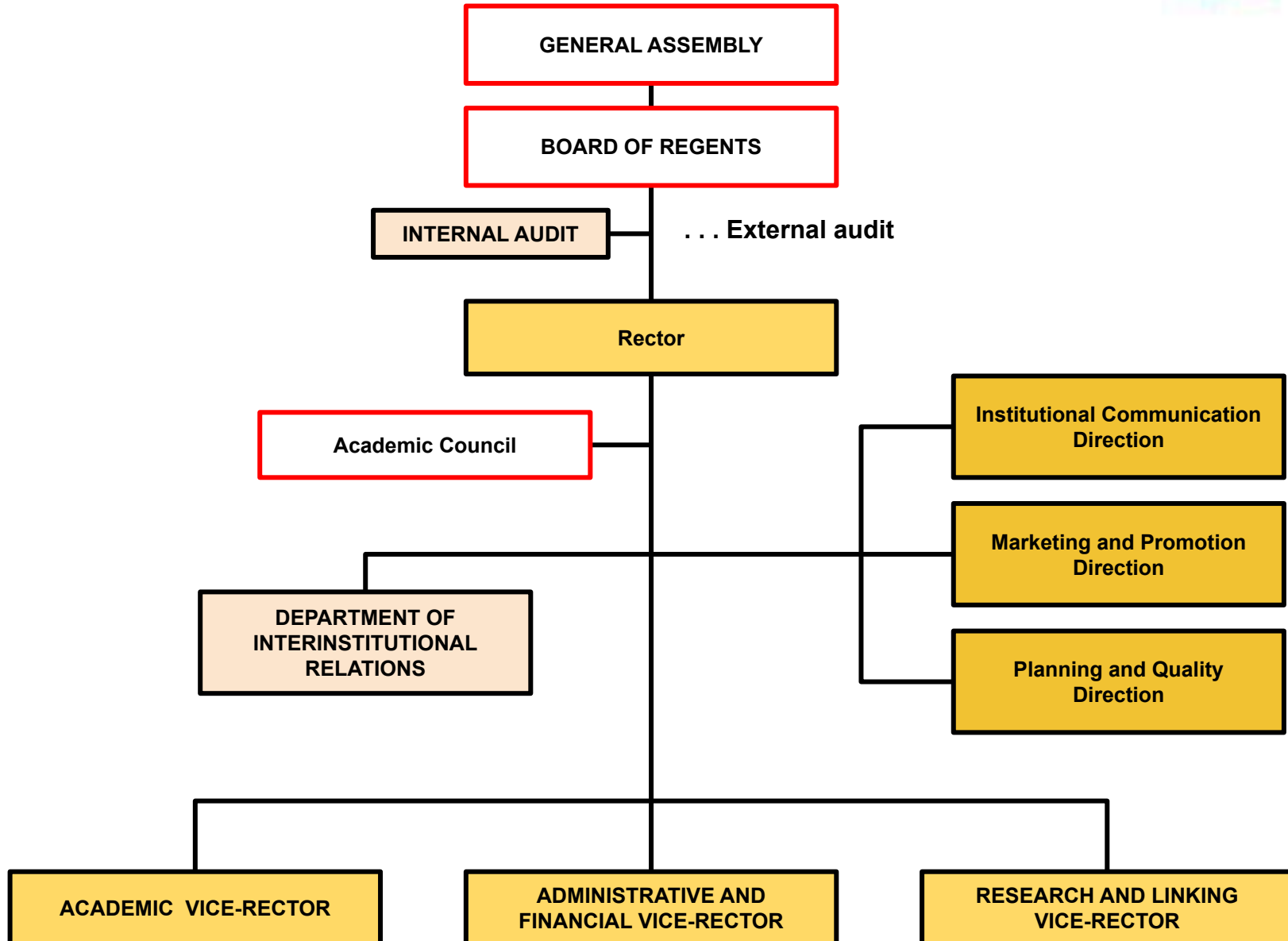
**Critical and  
creative thinking**

**Inclusion**

**Social  
responsibility**



# OUR STRUCTURE



## DIRECTRICES ESTRATÉGICAS

### ● APRENDIZAJE TRANSFORMADOR (AT)

Desarrollamos un sistema de aprendizaje sustentado en un diseño curricular flexible, metodologías innovadoras y evaluaciones continuas, en búsqueda activa de resultados académicamente relevantes.

### ● SOSTENIBILIDAD Y EXPANSIÓN (SyE)

Construimos una universidad que crece de manera sostenible, financieramente diversificada y altamente eficiente académica.

### ● CAPACIDADES ORGANIZACIONALES (CO)

Somos una persona que opera de manera eficiente y genera una cultura orientada al servicio de calidad, con transparencia y ética en las cuentas.

### ● CONOCIMIENTO, INNOVACIÓN Y EMPRENDIMIENTO (CIE)

Somos referentes en investigación y búsqueda continua de portales de emprendimiento mediante la gestión productiva del conocimiento, basada en actitudes de innovación, fomento de indagación y prácticas de implementación, para la transformación de la sociedad.

### ● VINCULACIÓN E IMPACTO SOCIAL (VyIS)

Actuamos como agentes de cambio e innovación mediante alianzas estratégicas con sectores claves, buscando en problemas y aplicaciones de ciencia e tecnología, propuestas relevantes de la sociedad.

## VALORES

**P** PENSAMIENTO CRÍTICO Y CREATIVO

**E** EXCELENCIA

**I** INNOVACIÓN

**I** INCLUSIÓN

**I** INTEGRIDAD

**R** RESPONSABILIDAD SOCIAL

## MAPA ESTRATÉGICO



## MISIÓN

Somos una comunidad universitaria plural e innovadora, que forma ciudadanos y profesionales éticos, emprendedores y competitivos a nivel internacional, y genera conocimientos en beneficio de la sociedad.

## VISIÓN

Ser la entidad que inspire creación de conocimiento, innovación y crecimiento, para contribuir al desarrollo sostenible de la sociedad.

## EJES TRANSVERSALES

CALIDAD  
SERVICIO EJEMPLAR  
VIRTUALIZACIÓN  
INTERNACIONALIZACIÓN

# OUR COMMUNITY

**5,039**

**Active Students**

**25,995**

**Alumni/graduated students**

**608**

**Professors**

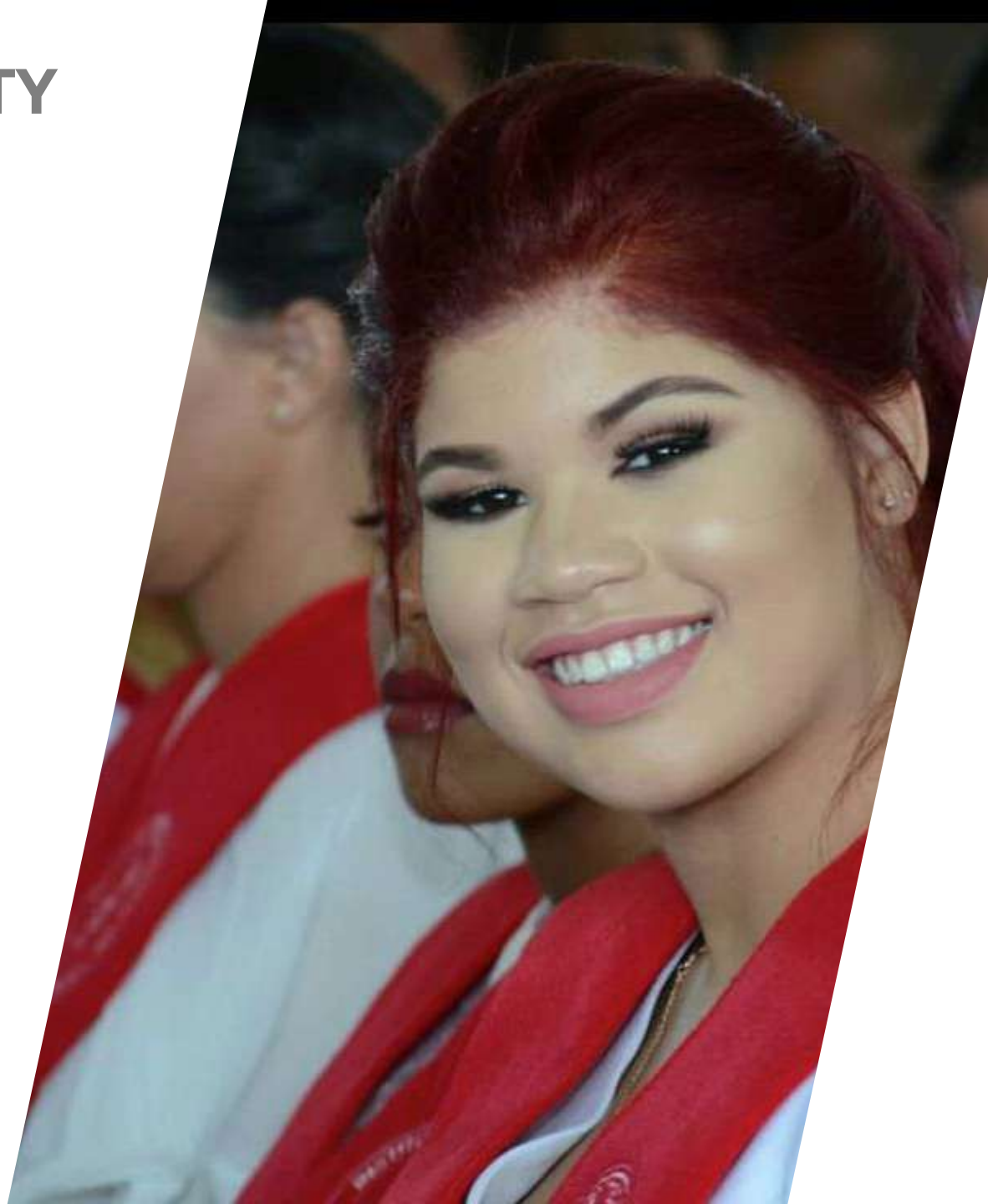
**473**

**Administrative Staff**

**57**

**Research projects in process**

- As of 2019



# INTEC FOR EXCEPTIONAL STUDENTS (PIES)

Each year around **50** students with **high academic achievement** Are selected to be part of the program, which provides **scholarships** and other benefits to support their undergraduate education.

With **support** from companies, alumni and friends of the institution.



The program was funded by **INTEC** in **1987**.

# OUR MAIN DIFFERENTIATORS

Innovative **undergraduate**  
and **graduate** programs



**Trimestral** academic calendar

**Emphasis** on engineering,  
science and technology





# 5 **ACADEMIC AREAS**

at the core of academic life

Health Sciences

Business

Basic and Environmental Sciences

Social Sciences and Humanities

Engineering

# 118 **PROGRAMS**

43 **undergraduate programs**

70 **graduate programs (6 dual degrees)**

5 **Phd programs**

11 **2+2 articulated undergraduate programs with final degrees granted by universities in the United States.**



**3/5** programs  
offered at INTEC are  
Graduate Programs.



# HEALTH SCIENCES

## **UNDERGRADUATE:**

- Medicine
- Odontology

## **GRADUATE:**

- Masters in integral and Adolescent's Health
- Specialization in Management of Health Services and Social Security
- Specialization in Clinical Nutrition

## **ACCREDITATIONS:**

- Caribbean Accreditation Authority for Education In Medicine and Other Health Professions (CAAM-HP)
- Medical Board of State of California
- National Committee for Foreign Medical Accreditation

## **EXCHANGES:**

- Choice of hospital rotations in the United States, Latin America and France, in hospitals and universities where INTEC has exchange agreements.



# ENGINEERING

## UNDERGRADUATE:

- Biomedical Engineering
- Civil Engineering
- Cybersecurity Engineering
- Electrical Engineering
- Electronics and Communications Engineering
- Industrial Design
- Industrial Engineering
- Transport and logistics Engineering
- Mechanical Engineering
- Mechatronics Engineering
- Systems Engineering
- Software Engineering

## GRADUATE:

- Specialization in Supervision of Construction Works and Management
- Specialization in Transportation
- Master in Cybersecurity
- Mastel in Sciences of Structural Engineering and Seismic-resistant
- Master in Sanitary and Environmental Engineering
- Master in Sciences of Construction Management
- Master in Supply Chain Management and Engineering
- Master in Maintenance Management and Engineering
- Master in Project Management
- Master in Industrial Engineering



# BUSINESS

## UNDERGRADUATE:

- Business Administration
- Corporate Accounting and Audit
- Commercial Communication and Advertising
- Commercial Engineering
- Economy
- Financial Engineering
- International Business
- Marketing and Electronic Businesses

## GRADUATE:

- Master in upper Management
- Master in Statistics
- Master in Finances
- Master in Quality and Productivity Management
- Master in Talent Management
- Master in Knowledge Economy and Innovation Management
- Master in Corporate Engineering – Dual Degree with Polytechnic University of Puerto Rico.
- Master in Business Administration (MBA)
- Master in International Trade Management – Dual Degree with the International Centre for Economic Policy for Sustainable Development (CINPE) (UNA)
- Master in Public Investment Management – Dual Degree with the Central Institute of Public Administration (ICAP)



# BASIC AND ENVIRONMENTAL SCIENCES

## UNDERGRADUATE:

- Major in Mathematics with Concentration in Statistics and Actuarial Sciences
- Biotechnology
- Bachelor's Degree in Chemistry with Secondary Education Orient
- Bachelor of Physics with Orientation in Secondary Education
- Bachelor of Mathematics with Orientation in Secondary Education
- Bachelor of Mathematics with Orientation in Secondary Education
- Bachelor's Degree in Chemistry with Secondary Education Orientation

## GRADUATE:

- Specialization/Master in Applied Mathematics
- Specialization in Environmental Education
- Specialization in Actuarial Calculation: Life and Pensions
- Master in Applied Physics
- Master/Doctorate in Environmental Sciences
- Master in Renewable Energy Technologies
- Master in Energetic Management for Sustainable Development



# SOCIAL SCIENCES AND HUMANITIES

## **UNDERGRADUATE:**

- Bachelor of Social Sciences with Orientation in Secondary Education
- Film and Audiovisual Communication
- Psychology
- Social Communication and Digital Media

## **GRADUATE:**

- Specialization in Violence Against Women from a Comprehensive Approach
- Specialization in Professional Technical Education
- Specialization in Initial Education
- Specialization/Master in Education Centers Management
- Specialization/Master in Educational Accompanying
- Master in Gender and Development
- Master in Gender and Equality Policies in Education
- Master in Educational Innovation
- Master in Clinical Psychology
- Doctorate in Education (Degree granted by the University of Seville, Spain)



# 2+2 PROGRAMS

## **INTEC – CTY COLLEGE OF NEW YORK:**

- Environmental Engineering

## **INTEC – PENNSTATE**

- Biological Engineering
- Engineering Sciences
- Energy Engineering
- Environmental Systems Engineering

## **INTEC – UNIVERSITY OF MIAMI**

- Architectural Engineering
- Environmental Engineering

## **INTEC – WESTERN MICHIGAN UNIVERSITY**

- Aerospace Engineering
- Chemical Engineering
- Mechanical Engineering

## **INTEC – UNIVERSITY OF ILLINOIS URBANA-CHAMPAIGN**

- Civil Engineering



# LABORATORIES

## TEACHING SUPPORT

Our laboratories are a central component of the learning process, both at the undergraduate and graduate levels. We encourage our students to know what, why and how. Among others, INTEC has laboratories of:

Energy Saving and Efficiency, Remote Sensing, Nanotechnology, Analytics and Environmental Services, Genetics, Chemistry, Physics.

Clinic Laboratory, Multipurpose Laboratory, Medical Simulation, Anatomy, Pharmacology, Biology.

Materials Science - Fluid Mechanics - Hydraulics - Mechatronics - Electronics and Communications - Process Automation - Manufacturing Process - Soil Mechanics - Electric Power - Industrial Design - Computing - Mechanics - Materials Testing - Advance Computations - Mathematics



# RESEARCH

**INTEC** has centers and research groups working on basic and applied research.

The Division of Research, Entrepreneurship and Innovation **facilitates** and **manages** administrative processes to promote research work, keeping track of performance, compliance and quality assurance.



# CURRENT RESEARCH FOCUS

Nanoscience/nanostructures

**Molecular modeling**

Applied mathematics

**Heat transfer/Solar energy**

Tropical ecosystems

**Climate change impacts and adaptation**

Water resources management

**Ecosystem services**

Cleaner production

**Logistics**

International trade

**Demography and migration**

Education

**Gender**

Governance





# INTEC CONSULTING AND SERVICES

We promote a culture of learning by experiencing and thus promote the **integration** of teachers and students in projects that seek to solve problems both for the community and public institutions in **public, private and NGOs sectors.**



# CENTER OF ENTREPRENEURSHIP AND INNOVATION

With a team of advisers who **work** with the students during the phases of **design** and **development** of ideas and business plans, it also offers financial **support mechanisms** for the pre - incubation phase and helps in seeking further economic support for promising **enterprises**.

# A SAFE CAMPUS

## INTEC 711

A campus wide program for the preservation of life and property, both for the university's community and visitors. Includes awareness raising campaigns for the promotion of safe practices and appropriate response behaviors.



## HEALTH SERVICES

A campus wide program for the preservation of life and property, both for the university's community and visitors. Includes awareness raising campaigns for the promotion of safe practices and appropriate response behaviors.



# ACCREDITATIONS



**Association to Advance Collegiate  
Schools of Business**



**Caribbean Accreditation Authority for  
Education in Medicine and Other  
Health Professions (CAAM-HP)**



**Entidad mexicana de Acreditación  
(EMA)**



**International Assembly for Collegiate  
Business Education (IACBE)**

# ASSOCIATIONS



**Association of International  
Educators (NAFSA)**



**Association of Universities and  
Research Institutes of the  
Caribbean (UNICA)**



**Council For Advancement And  
Support Of Education (CASE)**



**Cluster Software Inc (ClusterSoft)**



**Dominican Association of  
University Rectors (ADRU)**



**Dominican Chamber of  
Information and Communication  
Technologies (CAMARATIC)**

# ASSOCIATIONS



**European Association for  
International Education (EAIE)**



**Hemispheric Center for  
Cooperation in Research and  
Education in Engineering and  
Applied Science (COHEMIS)**



**Intellectual and Industrial  
Property Network in Latin  
America (PILA)**



**International Assembly for  
Collegiate Business Education  
(IACBE)**



**International Federation of Real  
Estate Professions (FIABCI)**



**Interuniversity Center for  
Development (CINDA)**

# ASSOCIATIONS



**Latin American and Caribbean  
Federation of Bioethics  
Institutions (FELAIBE)**



**Organization of Inter American  
Universities**



**Pan American Federation of  
Associations of Schools  
(Schools) of Medicine**



**C · R · E · A · D**  
**Remote Education Network  
Consortium (CREAD)**



**University Ibero-American  
Postgraduate Association  
(AUIP)**



**Union of Latin American  
Universities (UDUAL)**

# MEMBERSHIPS

Over **50** associations  
and networks

Promoting the participation of  
faculty and staff

National, regional and  
international organizations

In international networks and  
exchange programs

# Internationalization



# Internationalization

International  
Associations  
and  
Partnerships

Through the student Mobility Programs, undergraduate and graduate students can attend from quarter to one year, summer courses, internship programs, medical rotations, credit

Curricular  
planning

Curricular planning according to International standards and requirements

Mobility  
Programs

International  
and Joint  
Programs

Research  
and Joint  
projects

Presence in  
International  
events

NAFSA  
EAIE  
ERASMUS+ Ev

# INTERNATIONAL PARTNERSHIPS





# Agreements

**+11** PROGRAMS

**+32** undergraduate programs

**+68** Departamental agreements

## Areas of cooperation:

Exchange students and Staff

Research activities and projects

Workshops and others

# UNIVERSITY NETWORKS



**Centro Interuniversitario de  
Desarrollo | CINDA**



**Compostela Group of  
Universities**



**Consortium for North  
American Higher Education  
Collaboration | CONAHEC**



**Global Engineering Deans  
Council | GEDC**

# STUDENT EXCHANGE

**INCOMINGS**

**+350**

**OUTGOINGS**

**+556**



# INTERNATIONALIZATION STAFF

## Measures:

- **Learning** from good and new practices.
- **Internationalization** strategies.
- **Elimination** of the language barriers.
- **Elimination** of different administratives obstacles.

**2018...**

**INCOMINGS**

**+ 20**

**OUTGOINGS**

**+ 138**